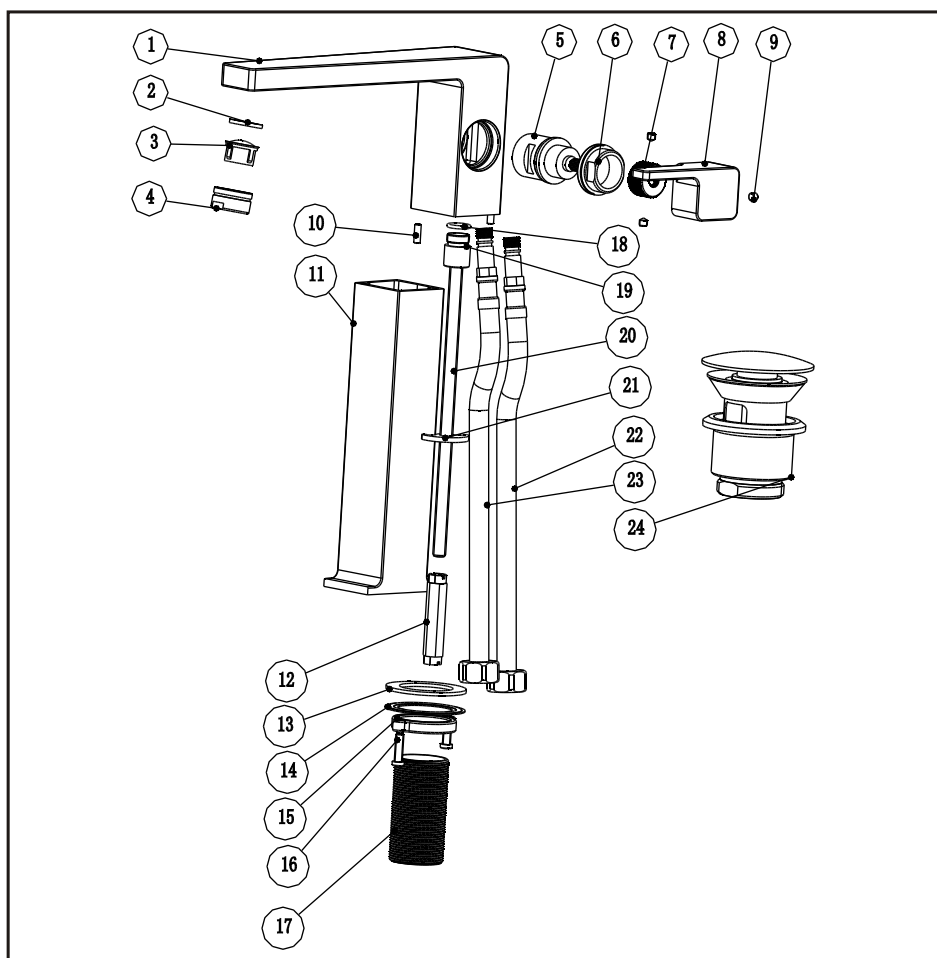


Raised basin mixer

Installation Instruction

Please read this instruction carefully to avoid any difficulty during installation.



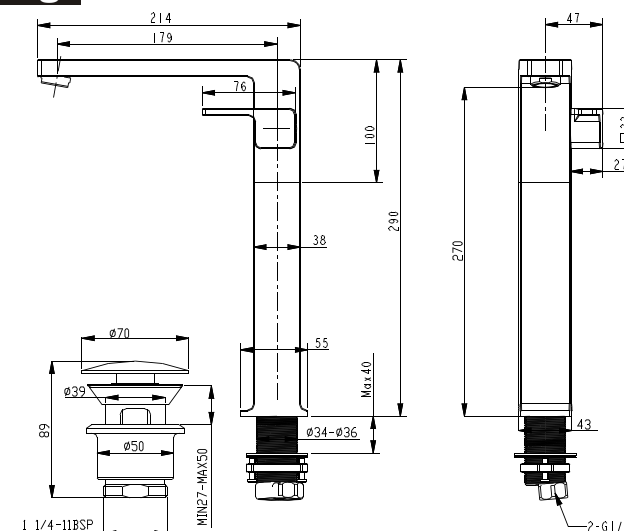
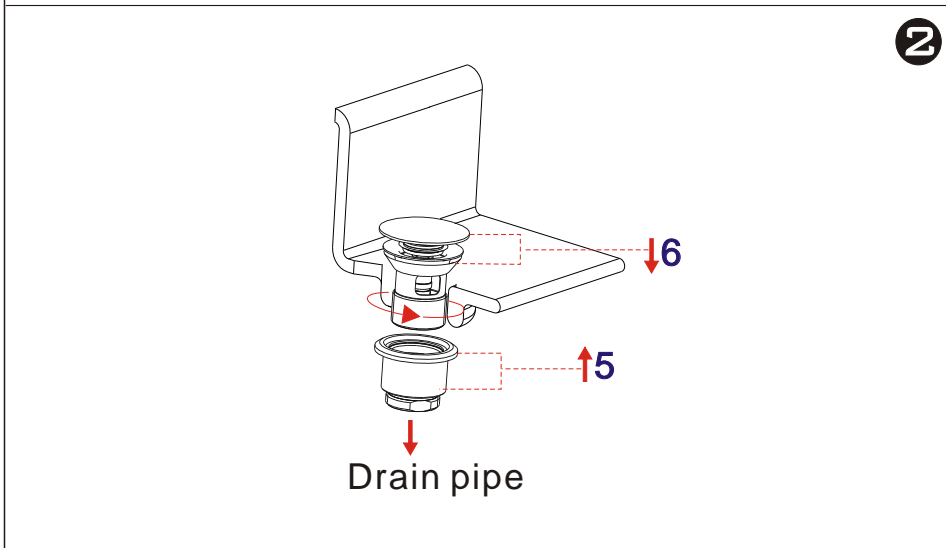
Components List

No.	Component	Quantity
1	Main body	1
2	Flat washer	1
3	Aerator core	1
4	Aerator coat	1
5	Ceramic cartridge	1
6	Cartridge fastener	1
7	Union	1
8	Handle	1
9	Female allen screw	3
10	Setting pin	2
11	Long pipe	1
12	Fastening nut	1
13	Washer	1
14	Fastening washer	1
15	Fastening nut	1
16	Cross-head screw	2
17	Thread pipe	1
18	O-ring	1
19	Stopper	1
20	Bolt	1
21	Fastening washer	1
22	Flexible connection hose (blue)	1
23	Flexible connection hose (red)	1
24	Pop-up waste	1

The diagram illustrates the two-step process of attaching the faucet to the sink.
Step 1: The faucet is lowered into the pre-drilled hole in the sink. A red arrow labeled '1' indicates the downward movement.
Step 2: The faucet is secured from the underside of the sink. A red arrow labeled '2' points to the faucet body. A red arrow labeled '3' points to the nut being tightened. A red arrow labeled '4' points to the washer being placed against the faucet base.
 A large red arrow in the center indicates the transition from Step 1 to Step 2.
 A circled '1' in the bottom right corner indicates this is the first step in the overall installation process.

1

2



A graph showing the relationship between flow rate (L/min) on the y-axis and pressure (Bar) on the x-axis. The y-axis ranges from 0 to 35 in increments of 5. The x-axis ranges from 0 to 5 in increments of 0.5. A red curve starts at (0,0), rises steeply to about (1, 8), then more gradually to about (2, 11), and continues to rise slowly towards (5, 17).

Pressure (Bar)	Flow Rate (L/min)
0	0
0.5	4
1	8
1.5	9
2	11
2.5	12
3	13
3.5	14
4	15
4.5	16
5	17

Flow pressure:

Min 0.05MPa

Max 1.60MPa

Recommended pressure:

0.1MPa to 0.8MPa (1 to 8 bar)

- 1.Ensure proper cleaning of the water supply pipe before installation to avoid any jammed
- 2.The cold-water supply must be connected on the right and the hot-water supply must be connected to the left.
- 3.Check the installation dimensions according to the Figure and ensure it is installed correctly.
- 4.Hot-water inlet temperature must not be over 80°C.